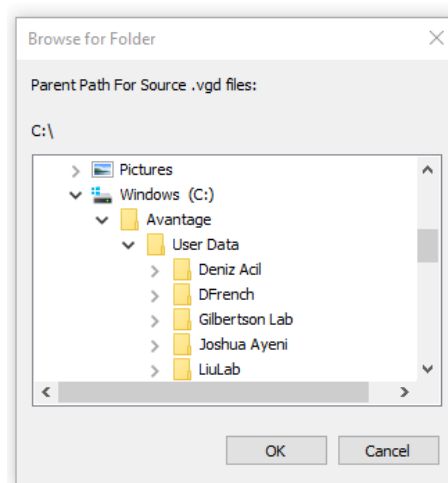
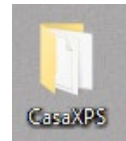
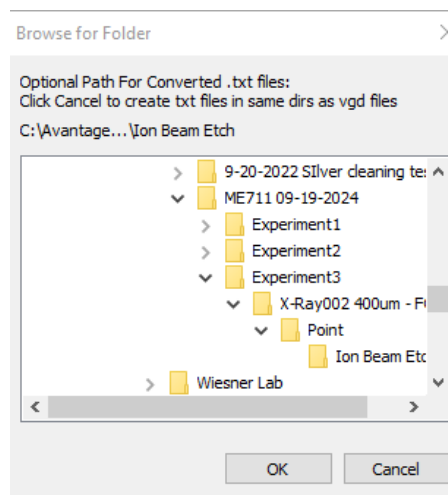


Instructions for Processing Nexsa Data Using CasaXPS

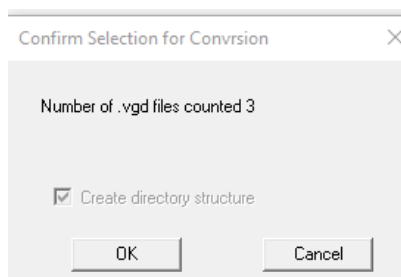
1. Copy the CasaXPS folder on the Nexsa computer desktop to your device.
 - This folder has the most recent version of CasaXPS and the correct library file for data collected on the Nexsa
 - *Note – using a previous version of CasaXPS with old library files will produce incorrect quantification for data collected on the Nexsa*
2. Convert Nexsa data to an AVG file
 - Open the DataSpace_BatchDump program from the Nexsa computer desktop
 - Select the folder where your data resides. *Note: The User Data folder is under the Avantage folder*



- Click OK and this will convert all data in that folder to an AVG format.
- Click Cancel on the window that appears to keep the AVG formatted data in the same folder as the original data



- Click OK on the Confirm window

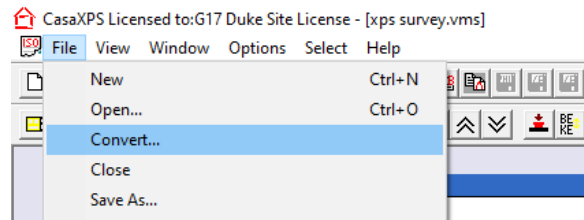


3. Read converted AVG files into CasaXPS

- Open CasaXPS



- Under the File menu, select Convert



- Navigate to the folder that contains your data and select the AVG files. Then click Open. Your data is now loaded into CasaXPS and can be processed.

